







**Product | Creative and Production | Studio**

**Global Stage Techs  
GST GEAR**

4301 S. Valley View Blvd. Suite # 23  
Las Vegas, Nevada, 89103

**The Artisan**

218 N. Chaparral St., Corpus Christi, Texas, 78401

[www.globalstagetechs.com](http://www.globalstagetechs.com)

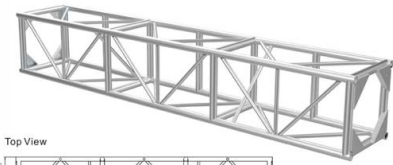
[www.gstgr.com](http://www.gstgr.com)

[NYBARA@globalstagetechs.com](mailto:NYBARA@globalstagetechs.com)

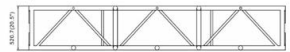
[xpwang@globalstagetechs.com](mailto:xpwang@globalstagetechs.com)

Tel: +1.702.612.6031

Tel: +1.315.212.6238



Top View



Side View



# About GST

The Global Stage Techs Divisions was founded in 2015 and has studios, manufacturing factories and offices located in Las Vegas, Corpus Christi, Florida in the U.S., Beijing, Shanghai and Hangzhou in China, having provided comprehensive live entertainment services for groups and individuals from North America, Europe and Asia. This includes theatrical specialized product sales, creative and production, studio rental, training and venue operations, etc.

Some of our past projects and clients include Beijing Universal Studios Theme Park, Shanghai Disney Theme Park, Amazon, Franco Dragone Entertainment Group, Cirque du Soleil, Broadway touring shows, immersive exhibitions, WWE, Latin Grammys, Billboard Music Awards, Jurassic Quest, Enchanted Christmas and artists such as Diddy, Bryson Tiller, Teyana Taylor, Dave East, LaRussel, etc., as well as performance groups such as Skillz Talk Dance Battle, Olympic Dance Battles and Rouge Las Vegas, in addition to local governments and communities' events and training facilities.



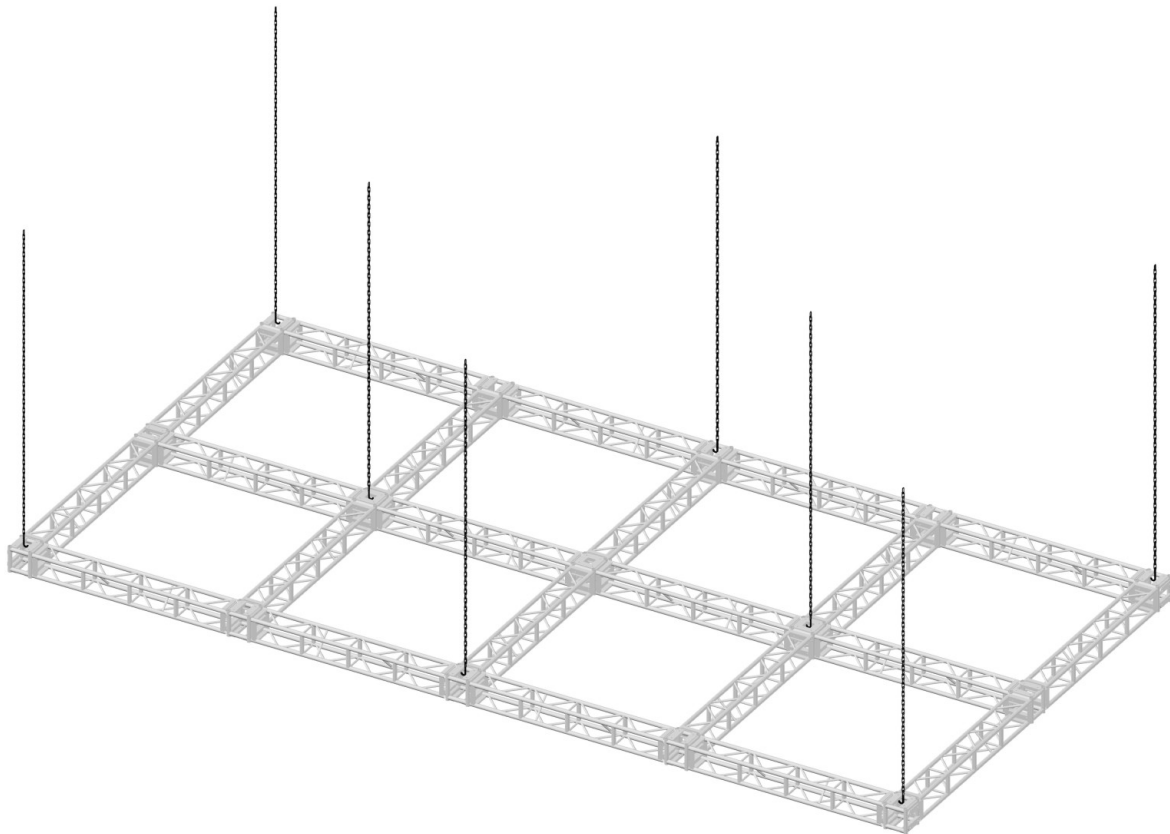
POETIC KINETICS



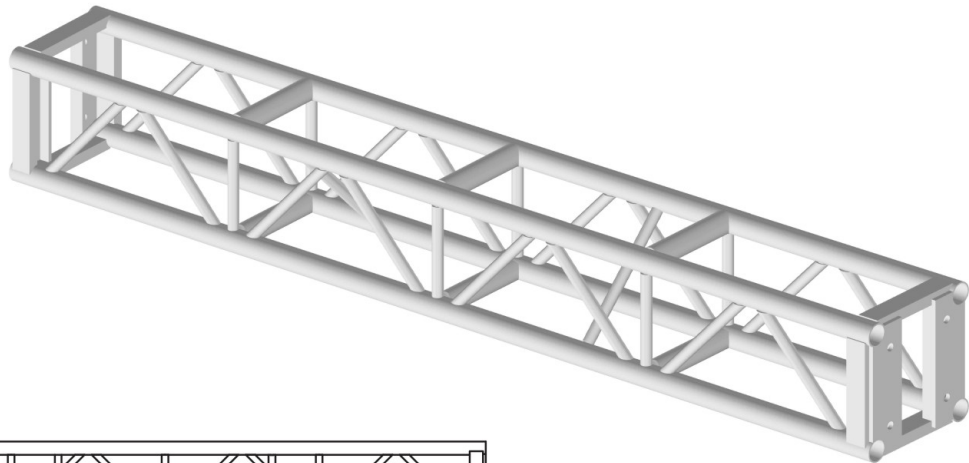
# 12" TBSH



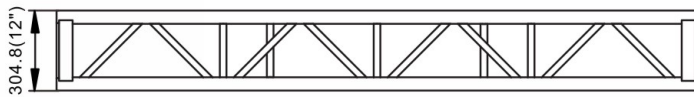
Stage truss case in Indonesia



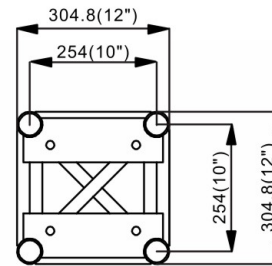
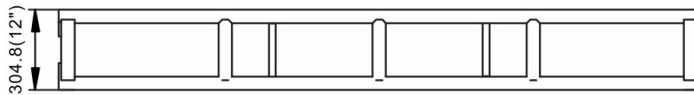
# 12" TBSH



Top View



Side View



Section Type Square	
Material	6061-T6 / 6082-T6
Main tube	Φ50.8X3.2
Vice Tube	Φ50.8X3.2
Braces	Φ25.4X3.2
Weight	~11kg/m

1 inch=25.4mm | 1m=3.28ft | 1 lbs=0.453kg

## Loading chart

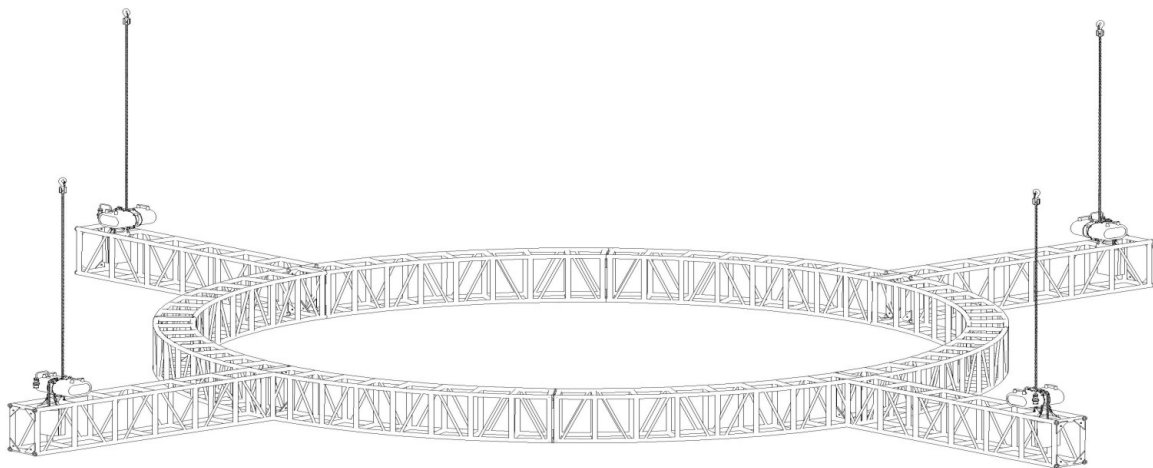
Maximum allowable uniform loads 				center point 		third point 		quarter point 	
Span feet(meters)	load kgs/ft	load lbs( kgs)	Max Defl mm	load lbs( kgs)	Max Defl mm	load lbs( kgs)	Max Defl mm	load lbs( kgs)	Max Defl mm
10 ( 3.05)	446	4460 2023	3.6	2231 1012	2.8	1673 759	3.6	1116 506	3.3
20 ( 6.09)	106	2120 962	13.7	1063 482	11.2	797 362	14.2	531 241	13.2
30 ( 9.14)	43	1290 585	31	650 295	25.7	487 221	31.8	325 147	29.7
40 ( 12.2)	21	840 381	54.9	426 193	47	319 145	56.1	213 97	53.3

Note: Deflections reported in the tables on the left are the maximum expected for full loadings( indoor only).All loads are based on 8'(2.44m) sections.other section lengths are available.Load tables are reprinted from engineering reports developed by Herman Huang & TUV Germany .Structural engineers,and apply to truss fabricated after February 2010.

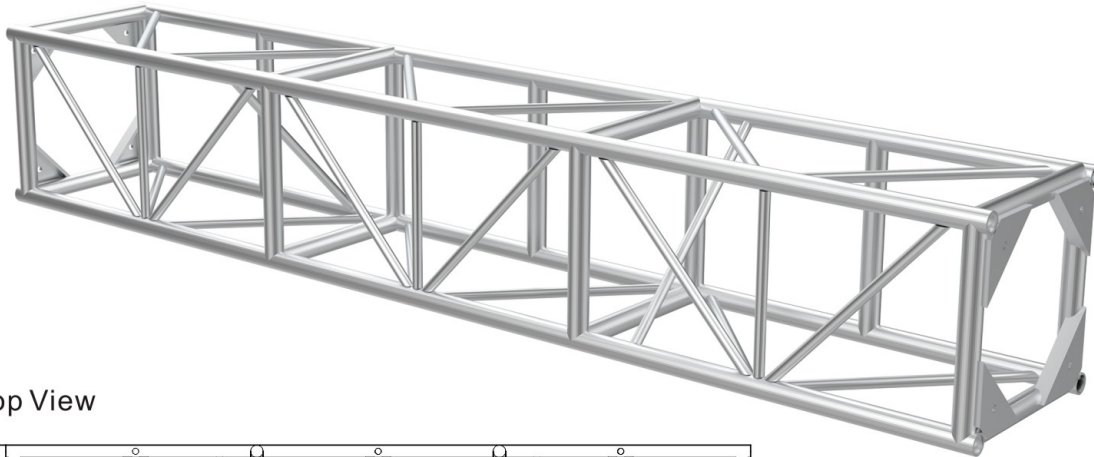
# 20.5" TBSH



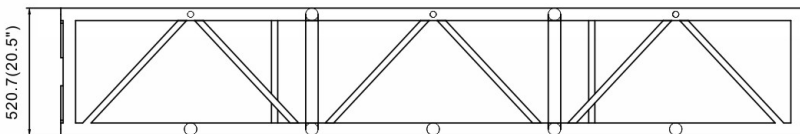
Stage truss case in China



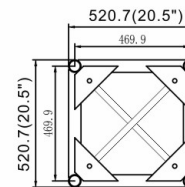
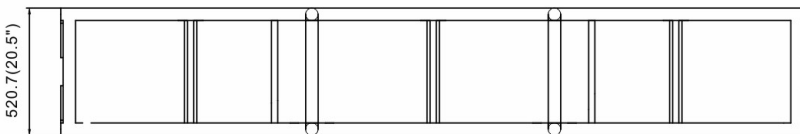
# 20.5" TBSH



Top View



Side View



## Section Type Square

Material	6061-T6 / 6082-T6
Main tube	Φ50.8X3.2
Vice Tube	Φ50.8X3.2
Braces	Φ25.4X3.2
Weight	~15kg/m

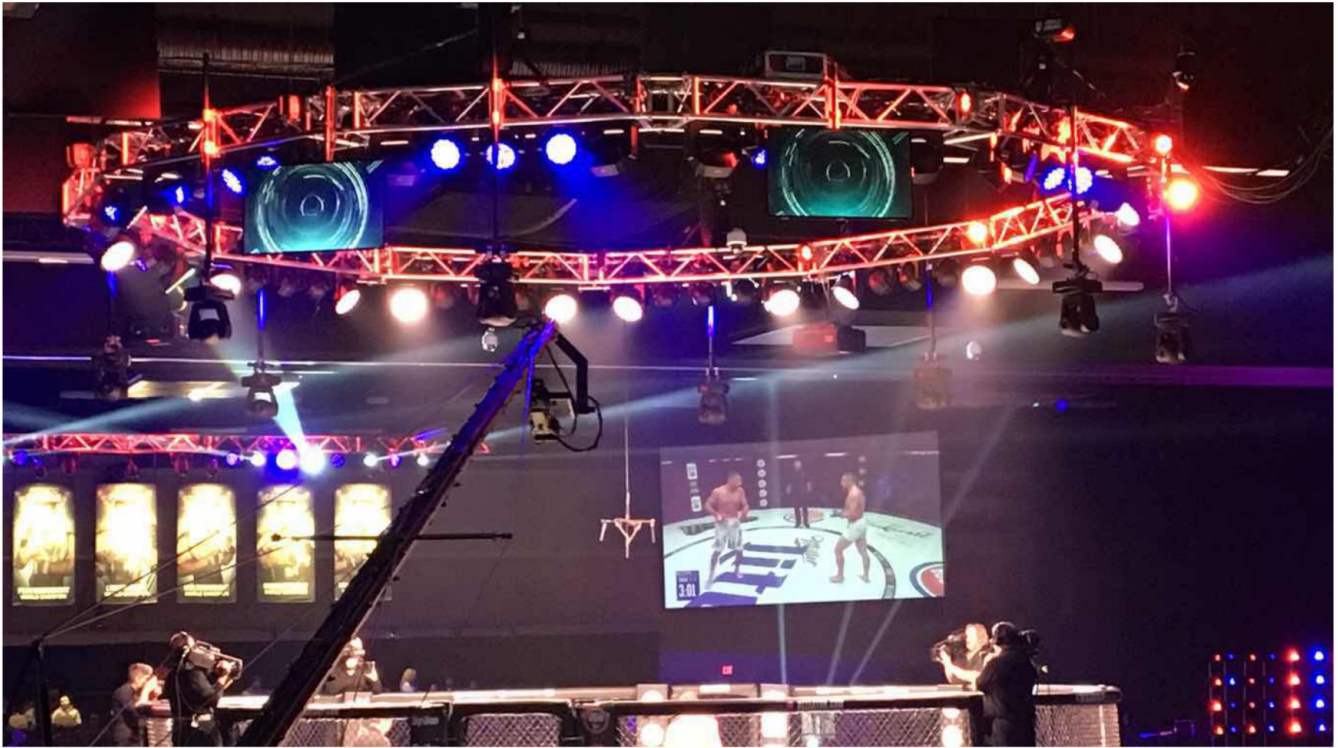
1 inch=25.4mm | 1m=3.28ft | 1 lbs=0.453kg

## Loading chart

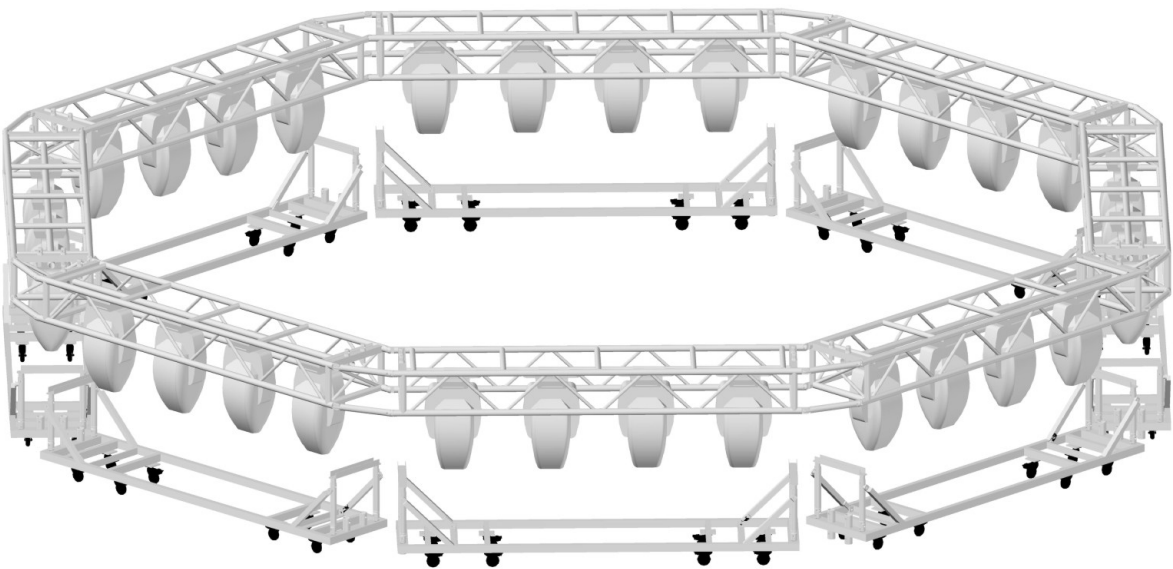
Maximum allowable uniform loads 				center point 		third point 		quarter point 	
Span feet(meters)	load kgs/ft	load lbs( kgs)	Max Defl In	load lbs( kgs)	Max Defl In	load lbs( kgs)	Max Defl In	load lbs( kgs)	Max Defl In
10 ( 3.05 )	840	8400 3810	0.19	4745 2152	0.18	3450 1565	0.20	2270 1030	0.19
20 ( 6.09 )	230	4600 2087	0.44	2306 1046	0.38	1729 784	0.43	1153 523	0.42
30 ( 9.14 )	105	3150 1429	0.88	1510 684	0.70	1120 508	0.85	810 367	0.90
40 ( 12.2 )	55	2200 998	1.41	1080 490	1.41	800 363	1.40	540 245	1.33

Note: Deflections reported in the tables on the left are the maximum expected for full loadings( indoor only).All loads are based on 8'(2.44m) sections.other section lengths are available.Load tables are reprinted from engineering reports developed by Herman Huang & TUV Germany .Structural engineers,and apply to truss fabricated after February 2010.

# TOUR TRUSS

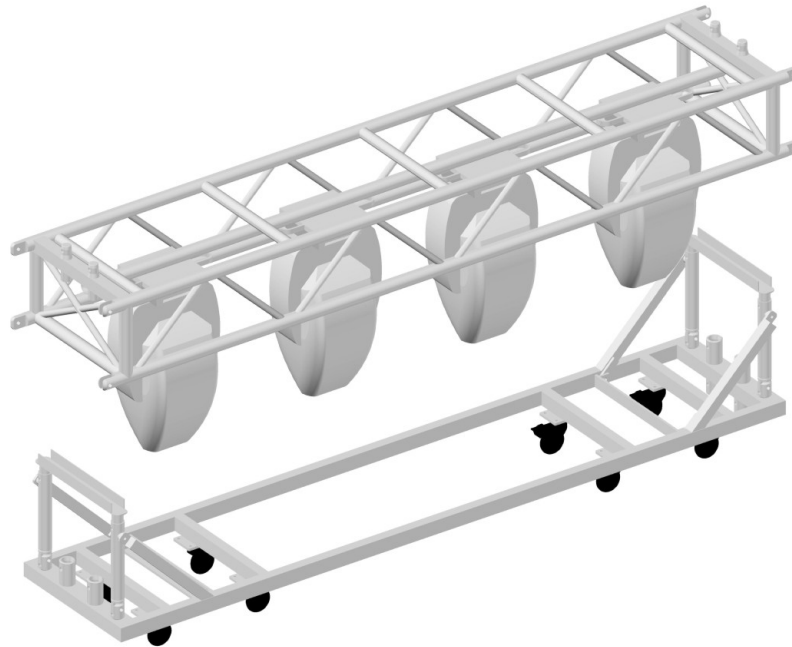


Stage truss case in America

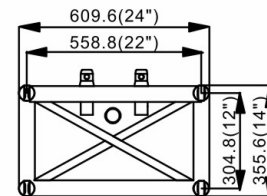
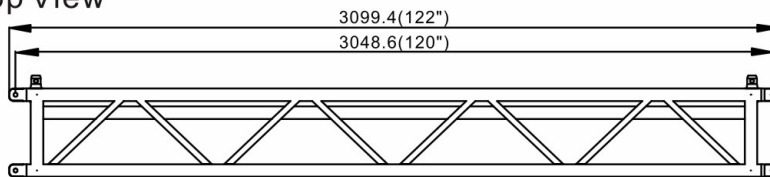




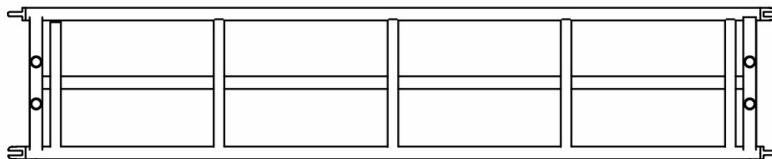
# TOUR TRUSS



Top View



Side View



## Section Type Square

Material	6061-T6 / 6082-T6
Main tube	Φ50.8X3.2
Brace Tube	Φ24.5X3.2
Weight	~34.9kg

1 inch=25,4mm | 1m=3.28ft | 1 lbs=0,453kg

TOUR TRUSS(Loading table)	Span(m)	3m	6m	9m	12m	15m	18m
UDL	(kg)	1695.5	1317.2	1235.4	1120.8	918.5	793.2
DEFLECTION	(mm)	3.2	13	42.1	90.9	152.2	238.4
CPL	(kg)	1178.8	1039.4	864.5	672.4	462.7	317.3
DEFLECTION	(mm)	4.3	18.4	46.7	87.3	127.8	168.2

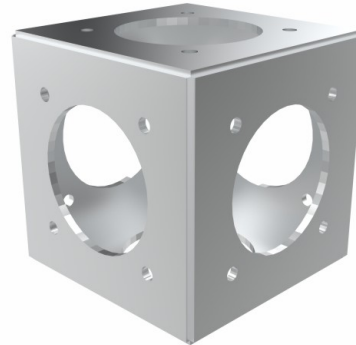
1 inch=25,4mm | 1m=3.28ft | 1 lbs=0,453kg

# 6 WAY CORNER BLOCK

## A-077

6 WAY CORNER BLOCK

12"x12" x12"

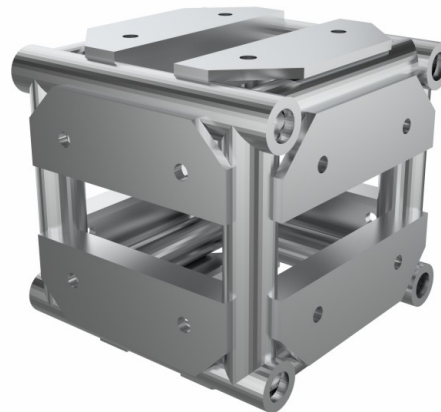


MODEL	DESCRIPTION
A-077	6-way flush corner block

## A-078

6 WAY CORNER BLOCK

12.75"x12.75" x12.75"

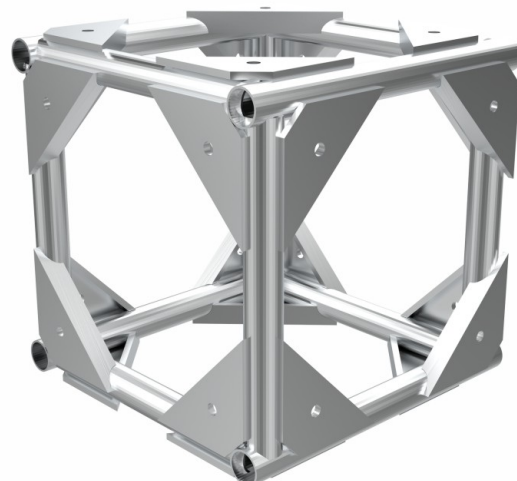


MODEL	DESCRIPTION
A-078	6-way corner block

## A-079

6 WAY CORNER BLOCK

FOR 20.5"x20.5" x20.5"



MODEL	DESCRIPTION
A-079	6-Way corner block for 20.5" x 20.5" Truss



## A-080/A-081

MODEL	DESCRIPTION	FITS
A-080	22.5 Degree Angle Block	12"x 12" Truss
A-081	45 Degree Angle Block	12"x 12" Truss



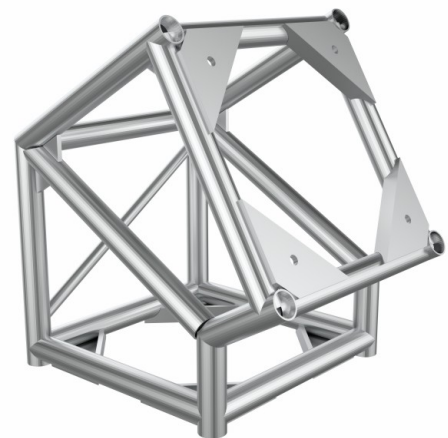
## A-082/A-083

MODEL	DESCRIPTION	FITS
A-082	Heavy-Duty 22.5 Degree Angle Block	12"x 12" Truss
A-083	Heavy-Duty 45 Degree Angle Block	12"x 12" Truss



## A-084/A-085

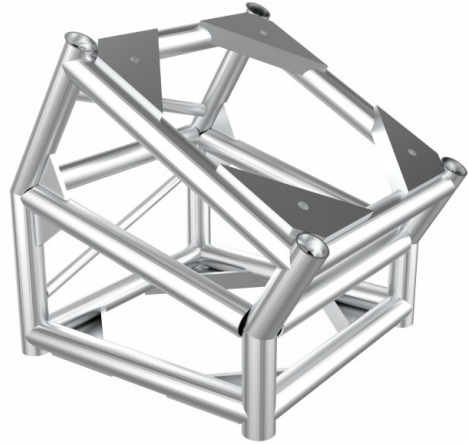
MODEL	DESCRIPTION	FITS
A-084	Heavy-Duty 22.5 Degree Angle Block	20.5"x 20.5" Truss
A-085	Heavy-Duty 45 Degree Angle Block	20.5"x 20.5" Truss



# ANGLE BLOCK & HINGE PLATE

## A-086

MODEL	DESCRIPTION	FITS
A-086	45 Degree Angle Block	20.5"x 20.5" Truss



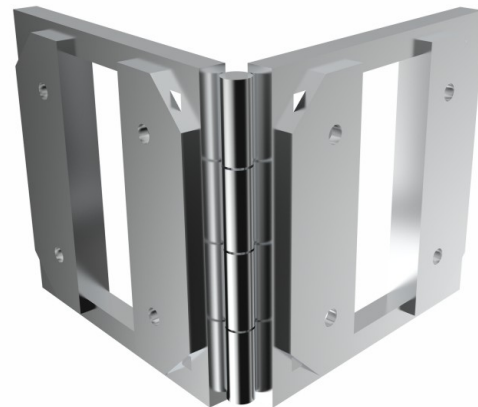
## A-087/A-088

### HINGED PLATES

Hinged Plates Are Made Of 10mm Thick Solid Aluminum Plate That Connects Truss At Your Desired Angle With A Clean Look. Available For Either 12" Box Truss.



A-087 DESCRIPTION  
Hinged Plate for 12"x12" Truss



A-088 DESCRIPTION  
Hinged Plate for 12"x12" Truss

#### FEATURES:

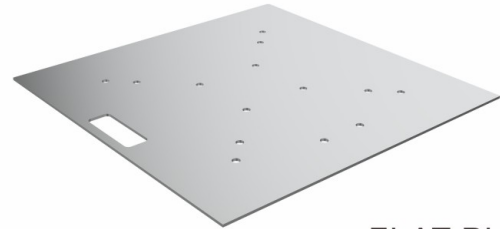
- Compatible with industry standard plated truss bolt pattern.
- 6061-T6 Aluminum Finish
- 10mm Thick Aluminum Plate



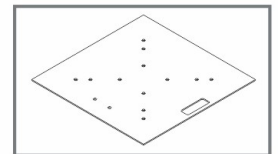
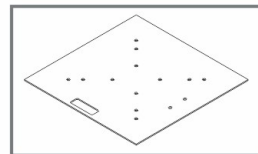
## A-089

Base Plate measures 30" x 30", 3/8" thick aluminum plate. Made specifically for 12", 290mm and 20.5" box truss. All holes are counter sunk for flush bolt mounting, and it also has one cut out handle.

DESCRIPTION	WEIGHT
30" x 30" Base Plate for 12" x 12" truss & 20.5" x 20.5"	14.28kg



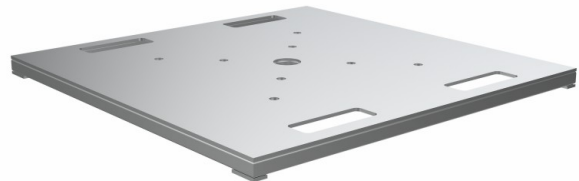
FLAT PLATE



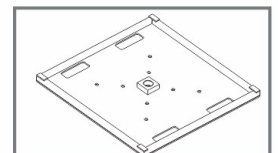
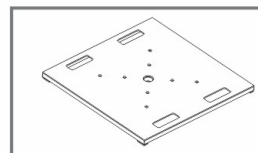
## A-090

Heavy Duty Base Plate is a 30" x 30" all-aluminum 1-1/2" raised base plate for any job indoors or out. It is designed to mount most 12", 290mm, 20.5" box truss sizes and also features offset hole patterns for balancing of 12" box truss when used to hang and support large flat screen monitors in a single column configuration. Large handle cut outs on both sides make it easier to pick up and move.

DESCRIPTION	WEIGHT
30" x 30" Heavy-Duty Aluminum Base Plate for 12"x12" & 20.5"x 20.5" truss	24.04kg



RAISED PLATE



## A-091/A-092

Heavy Duty Base Plate measures 36" x 36"

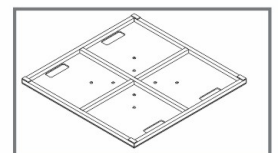
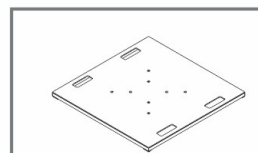
### FEATURES

- 6061-T6 Brushed Aluminum Finish
- 1/2" Thick Aluminum Top Plate
- 1" Thick Aluminum Frame



RAISED PLATE

DESCRIPTION	WEIGHT
36" x 36" Heavy-Duty Aluminum Base Plate for 12 x 12", 290mm x 290mm & 20.5" x 20.5" truss	34.02kg
48" x 48" Heavy-Duty Aluminum Base Plate for 12 x 12", 290mm x 290mm & 20.5" x 20.5" truss	58.51kg



# CART

## A-096/A-097/A-098



Our base plate carts are a must have for touring, production & rental companies. These aluminum carts are available in 3 different sizes for 30"/36"/48" squared base plates. Base Plates available but sold seperately.

### MODEL DESCRIPTION

A-096 Holds up to 8, 30" x 30" Base Plates

A-097 Holds up to 6, 36" x 36" Base Plates

A-098 Holds up to 4, 48" x 48" Base Plates

SIDE VIEW



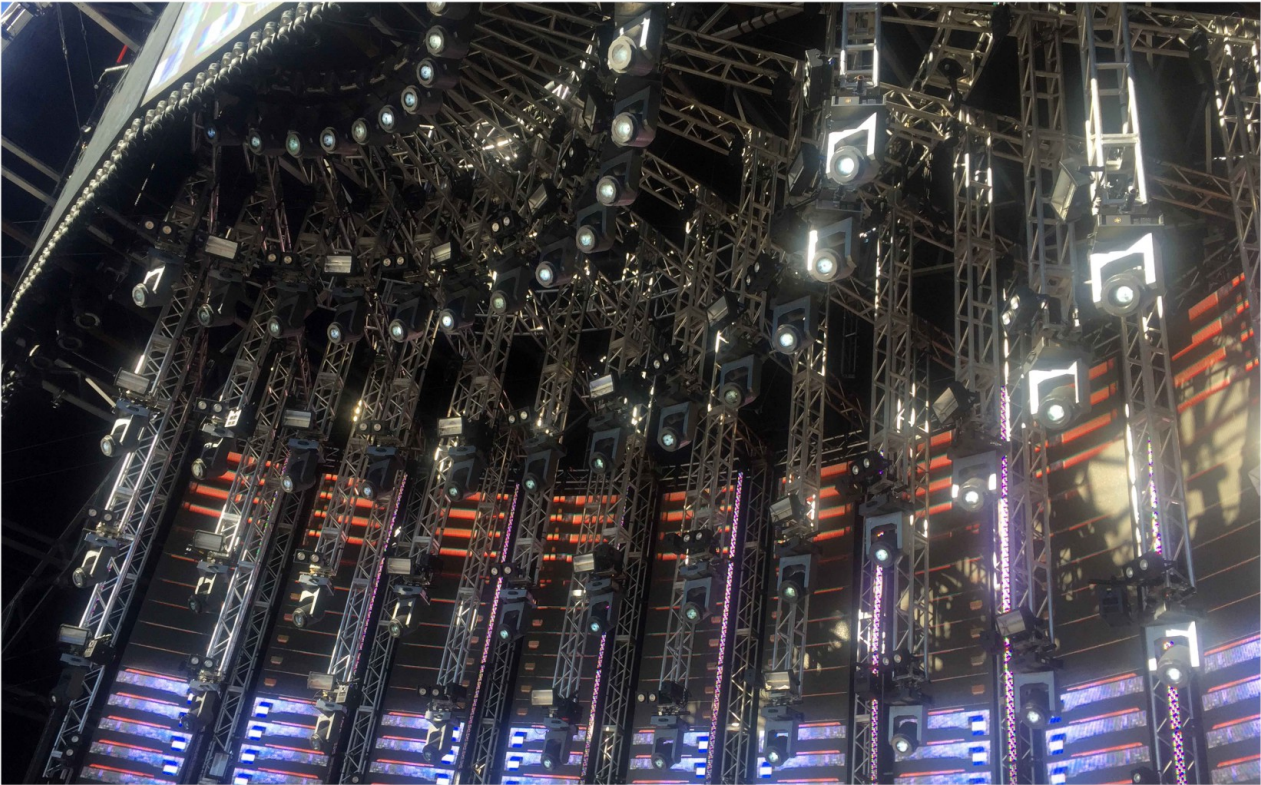
**36"X36"  
BASE PLATE CART**  
BASE PLATES NOT INCLUDED

FRONT VIEW

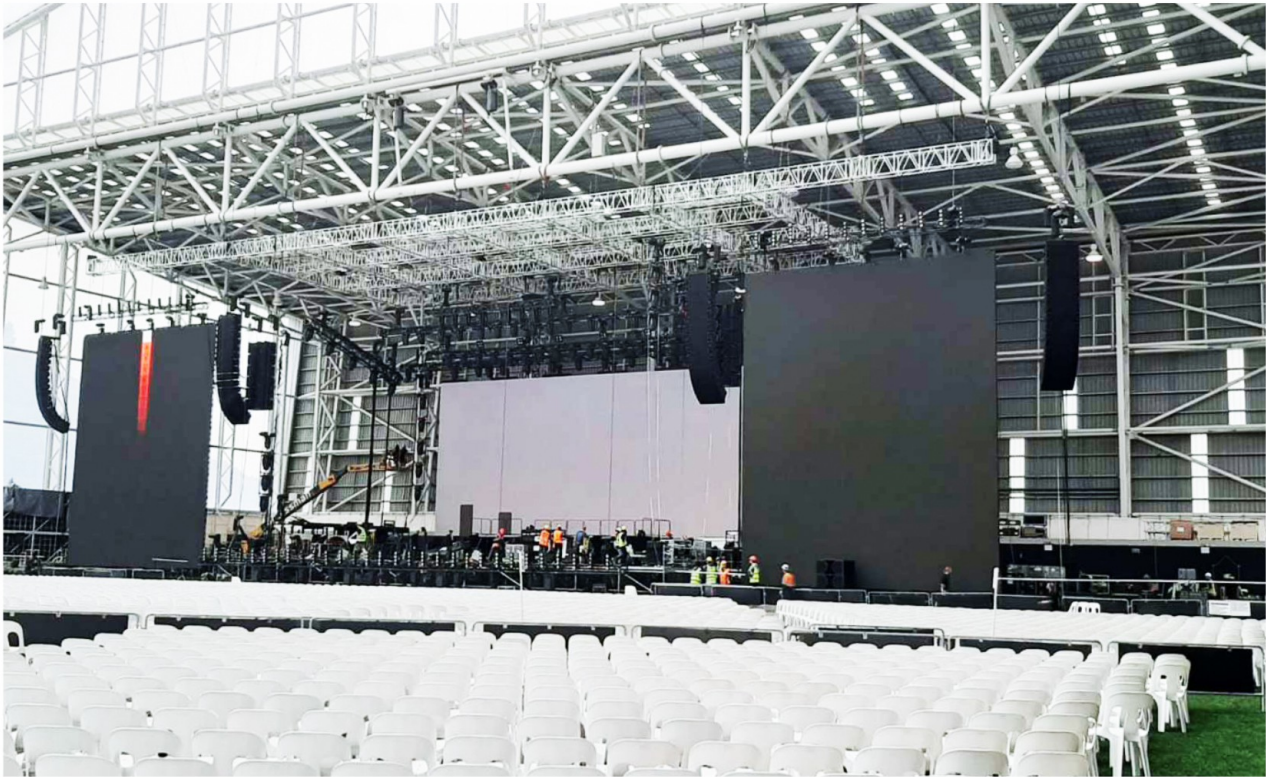


**30" x 30"  
BASE PLATE CART**  
BASE PLATES SOLD SEPERATLEY











## "THE HUB"

This is the heart beat of GST! This room may be reconfigured to suit your needs. Networking, creative meeting space, classroom configuration, or transformed to an extended Pre-Visualization suite for your high profile artist!



## "THE PREVIZ"

"The Previz" suite is available for your pre-production needs. "The Hub" + "The Previz" suite may be configured to accommodate your video editing needs as well.



## "THE BLACK BOX"

Auditions, rehearsals, photo shoots, or video shoots, "The Black Box" may be your solution! We have 8 Ayrton Ghibli moving light fixtures. One hanging point (no dynamic weight) available with stagehand. Green screen available upon request.



## "THE MATRIX"

Rigging, "acrobatic rigging", fall protection, rescue, or rope works, GST will train and certify. When not used for training, "The Matrix" provides unique mini studios or artist rehearsals with acrobatic hanging points. Green Screens may be available.



## TRAINING

The GST team and trainers are certified in various disciplines. From Red Cross First Aid & AED certification, lighting programming, and rigging. We also invite other certified trainers to the studios to share their knowledge with the entertainment community!



## CONSULTATION

Entertainment Safety is our specialty! Each of the partners have either obtained their "Safety Health Practitioner" Certification or currently in the process. GST is currently enrolled in the NV Safety & Health Achievement Recognition Program.



## GST ALUMNI

Who are the Alumni of GST? For the most part they are professional technical crew specializing in entertainment. These individuals may have either taken courses, received training and certifications, or perhaps entertainment professionals who have contributed to the success of GST.

As these individuals have either been vetted or certified through GST, they become highly desirable to various producers for their productions.

GST will support these producers by recommending trained and certified individuals or teams.

## GST OUTREACH

The effects of the recent pandemic has impacted many entertainment industry professionals here in Las Vegas.

During these uncertain times, we discovered that these professionals became financially burdened and were unable to either maintain their certifications or unable to acquire new training.

When we meet individuals who are interested in attending any of our course offerings we offer subsidized assistance.

## LAS VEGAS STUDIO:

4301 S. Valley View Boulevard - Suite #23  
Las Vegas, NV 89103

## CONTACT:

Noe Ybarra President  
Xiaopo Wang General Manager  
NYBarra@GlobalStageTechs.com  
XPWang@GlobalStageTechs.com  
+1(702)612-6031 NY  
+1(315)212-6238 XW

## CURRENT CLIENTS:



## PREVIOUS CLIENTS:



## AFFILIATE PROGRAMS:



## Studio & Training Facility

Our mission is to support the entertainment community (from producers, artists, and technical crew alike) by introducing the educational element to the successful GST Training & Development Division.

The GST Las Vegas Studio has become a central hub for resources to support industry professionals. GST seeks qualified trainers to offer various disciplines as course offerings, assessments or recertifications within our 5,000+ sq ft facility.





[www.globalstagetechs.com](http://www.globalstagetechs.com)

[www.gstgr.com](http://www.gstgr.com)

Product | Creative and Production | Studio  
for the Culture and Entertainment