

GLOBAL STAGE TECHS INC.



GST GEAR

Professional Lighting

GLOBAL STAGE TECHS INC.

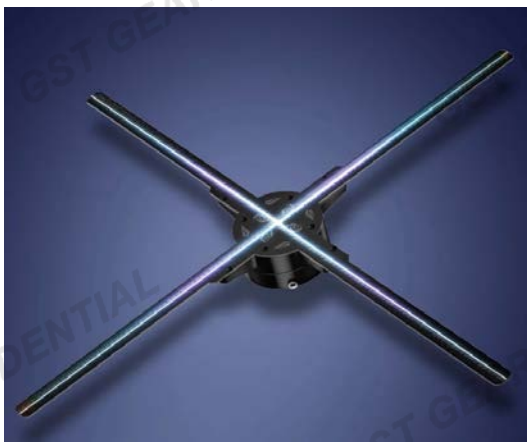
Address: 4301 S. Valley View Blvd., Suite # 23, Las Vegas,
Nevada, USA, 89103

E-mail: usoffice@gstgr.com

Tel: +1-315-212-6238

Web: www.gstgr.com

GST-Hologram Logo 4 Leaf



Specification:

- Light Source: 384 High-Brightness LEDs (100cm)
- Connectivity: WIFI connection
- Splicing: Supports splicing
- Control: APP control
- Editing: Supports text editing, Brightness Adjustment, Angle Adjustment
- Audio Source: Bluetooth audio

GST-Advertising Logo Projection Light



Specification:

- Voltage: 110V~240V
- Power: 35W/50W/60W
- Control: Remote/Non-remote
- Waterproof: IP67/Non waterproof
- Color: Matte black/Matte silver
- Features: Light beads imported from Germany, bright colors and patterns, long life, super heat dissipation
- GOBO: Customizable pattern



GST-Hologram Logo 2 Leaf



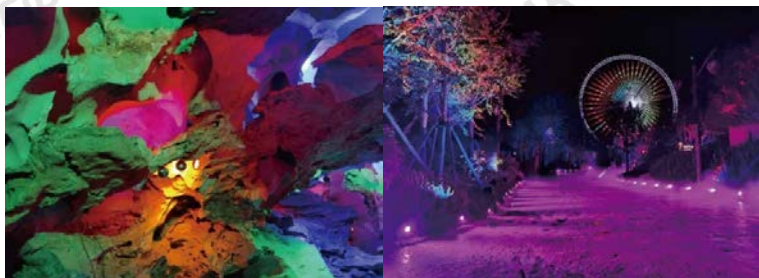
Specification:

- Light Source: 384 High-Brightness LEDs (42cm)
- Connectivity: WIFI connection
- Splicing: Supports splicing
- Control: APP control
- Editing: Supports text editing, Brightness Adjustment, Angle Adjustment
- Audio Source: Bluetooth audio

Scan the code to view the demo video



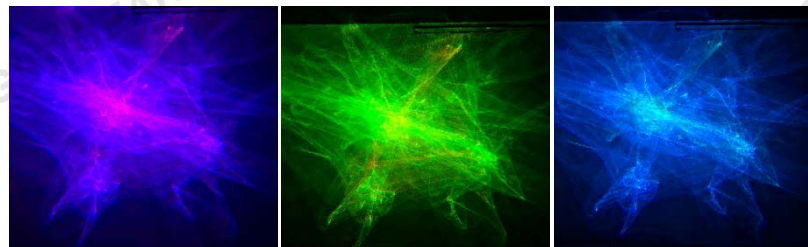
GST-Waterproof 7 LED PAR Light



Specification:

- Input Voltage: AC220-250V, 50/60Hz
- Rated Power: 110W
- Light Source: 7*15W high-power LED (4-in-1 RGBW)
- Channels: 4/6/8 channels
- Color Mixing: RGBW infinite color mixing
- Dimming: 4 dimming curves
- Strobe: 0-30Hz
- Control: International standard DMX512
- Display: OLED function menu with 4 touch buttons
- Heat Dissipation: Intelligent temperature control, active cooling
- Maximum Ambient Temperature: 40° C
- Minimum Ambient Temperature: -20° C
- Maximum Housing Temperature: 65° C
- Power Connection: IP65 power input/output connector
- Data Connection: IP65 DMX signal input/output connector
- LED Lifespan: 60,000-100,000 hours
- Waterproof Rating: IP65
- Net Weight: 4.3kg

GST-Colorful Aurora Laser Light



Specification:

- 2W High brightness RGB Aurora laser with IP65 protection level, capable of working outdoors in all weather conditions. It presents a high-brightness and dreamy aurora-like effect in the air, capable of producing monochromatic and multicolored moving patterns. It can be controlled via DMX, with adjustable brightness, color changing speed, and various effects such as strobing. It is a powerful lighting fixture with unique and novel lighting effects.
- Features: The aurora sky effect has delicate lighting and excellent color monochromaticity, with a projection angle of 60 degrees

Laser:

- 600mW Green laser with a wavelength of 520nm
- 500mW Red laser with a wavelength of 638nm
- 1000mW Blue laser with a wavelength of 450nm
- 1. Laser lifespan: >10000 Hours
- 2. Protection level: IP65
- 3. Ambient environment: Indoor and outdoor, -30° C to 40° C
- 4. Control modes: DMX512, Auto mode, Manual monochrome mode, Master-slave synchronization mode
- 5. Size: 125*240*95mm
- 6. Weight: 2.4kg
- 7. Application areas: Stage, Lighting shows, Outdoor illumination, Scenic spots, Gardens

GST-Waterproof 4 LED Light



Specification:

- Voltage: AC110V/220V, 50/60Hz
- Power: 450W
- Light source: 4 pcs 100W 2in1 LED light beads (warm/white adjustable)
- Light Angle: Reflector Cup
- Illuminance: 960lux(5m)
- Best distance: 15-30m
- Luminous: 8624lm
- Lifetime: 60-100 thousand hours
- Dimming: 0-100% linear dimming
- Channel: 6 CH
- Mode: DMX512, Master-slave, Voice control, Auto
- IP Protection: IP65

GST-12W LED Moving Beam Light



Specification:

- Voltage: AC100-240V 50/60Hz
- Source: 12pcs 12W 4in1 CREE LED
- Power: 200W
- Channel: 13/15CH
- Pan/Tilt: Pan 540Tilt Infinite rotation
- Mode: DMX512Master-slave, Voice, Auto
- Size: 260*160*350mm
- N.W.: 4.5kg
- G.W: 5.0kg

GST-Dual Moving Laser Light



Specification:

- Voltage: AC100-240V 50/60Hz
- Source: 10W LEDx12pcs RGBW 4in1
- Power: 120W
- Channel: 11/14CH
- Pan/Tilt: Pan 540°, Tilt Infinite rotation
- Control mode: DMX512, Master-slave, Voice control, Auto
- Size: 320x170x300mm
- N.W.: 4.85kg

GST-Infinite Starry Light



Specification:

- Voltage: AC95V-245V 50Hz
- Power: 40W
- Laser: Blue laser 11pcs 100mW
- Red laser 2pcs 200mW
- Channel: 15CH
- Mode: DMX512 Master-slave Voice. Auto
- Dimming: 0-100% super smooth dimming
- Strobe: 20 times/sec

GST-Triangle Matrix Light



Specification:

- Power: 200W
- Voltage: 100-240V, 50/60Hz
- Main light: 16 LED (30 units 1600K+30 units 5600K), 0.2W
- Auxiliary light: 150 units 0.2W white LED, 4000K color temperature
- Control signals: DMX512, RDM, ART-NET
- Channel:4
- Channel modes: 27/32/42/182 DMX channels
- Size: 796*689*290mm
- Net weight: 8kg
- LCD screen, English interface

GST Move Wash ZM-1915



Specification:

- Input voltage: 100-240V 50/60HZ
- Power supply: 600W
- Light source: 15W (Tianxin) 4 in 1
- Color: red, green, blue and white
- Finger: Ra96
- High brightness output: 12000 lumens minimum aperture)
- LED lifetime: up to 50,000 hours (70% of light output)
- Ontrel mode: DMX built-in program voice control self-propelled
- Multi-channel mode selection: 16 channels/36 channels
- Built-in surface light mode
CTO:2800K/3200K/4200K/5200K/7200K
- Zoom range: 8-60
- Product color: black
- Display mode: touch + button
- IP level: IP12
- Features: integrated mother board design, to solve the smoke oil, color paper and other issues, separate segment control lamp beads, horse racing effect, built-in and other rich effects, products built-in RDM remote console dial function
- Weight: 13 KG

450W Mini230 Beam



Specification:

- Voltage: AC90-240, 50/60Hz
- Total Power: 80W
- Light Source: 1 30W white light bulb + 12 LED light strips + 80mW green laser;
- Channel: 10/14 channels
- Color: 8 colors
- Patterns: 8 patterns
- Focusing: Electric focusing
- DMX512: Master, slave, control mode
- X-axis: 540° ; Y-axis: 270°

450W Mini230 Beam



Specification:

- Voltage: AC100-240V 50/60HZ
- Light Source: 7R Osram bulb
- Total Power: 450W
- Electronic Focus: 50,000 LUX at 20 meters
- Channel Mode: 16 international standards
- Rotating Pattern Plate: 17 plug-in color chips + white circles, with pattern dithering and pattern arbitrary positioning function
- Strobe: 0-13 times/second, and random strobe and pulse strobe
- Color Disc: 14 pluggable color chips + white light, with a rainbow effect of two-way rotation
- Atomization: With atomization effect
- Horizontal Scan: 540 degrees
- Vertical Scanning: 250 degrees

GST Strobe RGB



Specification:

- Working Voltage: AC100V-240V
- Rated Power: 500W
- Light Source: 7pcs 60W LED + 168pcs 0.5W SMD RGB LED
- Control Mode: Built-in effects, master-slave, manual mode, DMX512, sound control
- DMX Channels: 4CH/6CH/28CH/30CH
- Display: LCD screen + four touch buttons
- Power Connection: Power IN/OUT
- Signal Connection: 3Pin/5Pin DMX IN/OUT
- Housing: Aluminum frame + sheet metal
- Protection Level: IP20
- Dimensions: 860*966*170mm
- Net Weight: 17.5KG

GST Logge LX SFX Light



Specification:

- 35W Logo Waterproof
- 2 GST
- 2 Artisan

Planet I



Specification:

- Power Supply: AC110/220V 50-60Hz
- Light Source: 10W LED * 8PCS
- Light Strip: 5050 * 96PCS
- Power: 120W
- Control: Self-propelled, voice-activated, DMX512, master-slave
- Net Weight: 4KG
- Gross Weight: 5KG
- Product Size: 26,5 * 20 * 38cm

Planet III



Specification:

- Power Supply: AC110/220V 50-60Hz
- Light Source: 10W LED * 12PCS
- Light Band: 5050 * 96PCS
- Red Laser: 100mW
- Green Laser: 50mW
- Blue Laser: 500mW
- Power: 150W
- Control: Self-propelled, voice-activated, DMX512, master-slave
- Net Weight: 5.5KG
- Gross Weight: 7KG

P06 RGB 500 6 Dilde Color Beam



Specification:

- 2W high-brightness colorful starry sky light, full-star effect, excellent monochrome red, green, blue, yellow, pink, cyan, white. Seven monochrome lasers, can also be dimmed and colored through DMX or remote control, which previous RGB three-color full-star lasers cannot achieve. It has color-changing, variable speed, frequency flashing, and other effects. Powerful function, gorgeous effect.
- 1. Operating Environment: Indoor and outdoor, -30° C--40° C
- 2. Scanning System: Using precision stepper motor, 60-degree projection
- 3. Control Mode:
- DMX512, automatic, manual monochrome mode, master-slave synchronization
- 4. Power Supply: 100~250V, 50/60Hz, 20W
- 5. Machine Size: 125*240*95 (height) mm
- 6. Machine Weight: 2.4kg

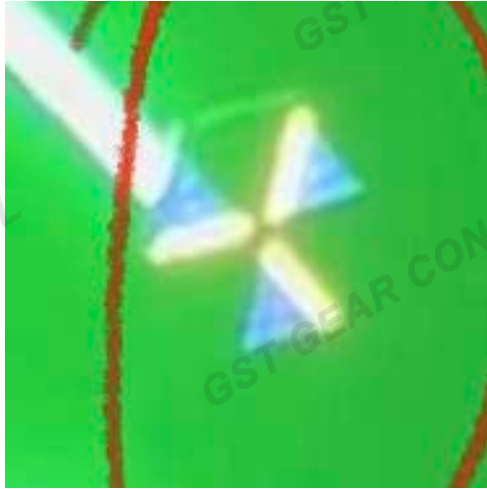
GLD 05 RGB 2W 7 Color Star Light



Specification:

- Input Voltage: AC100-240V/50-60Hz
- Total Power: 250W
- Main Light Source: 6pcs 30W golden module
- Foreground Light Source: 216*0.5W white light beads
- Background Light Source: 216*0.2W RGB background auxiliary light source
- Operating Mode: DMX512, sound control, self-propelled, master-slave
- Control Channels: 6/11/13/42/71CH
- Dimming/Strobe: 1-20 times/second
- Dimensions: 400*200*150mm
- Net Weight: 3.2KG
- Gross Weight: 4.5KG

LED OX SFX Light



Specification:

- Input Voltage: AC100-240V/50-60Hz
- Total Power: 250W
- Main Light Source: 6pcs 30W golden modules
- Foreground Light Source: 216*0.5W white light beads
- Background Light Source: 216*0.2W RGB background auxiliary light source
- Operating Modes: DMX512, sound control, self-propelled, master-slave
- Control Channels: 6/11/13/42/71CH
- Dimming/Strobe: 1-20 times/second
- Dimensions: 400*200*150mm
- Net Weight: 3.2KG
- Gross Weight: 4.5KG

GST SFX Air Column



Specification:

- Power: 1500W
- Net Weight: 8.7kg
- Voltage: AC220v/240v.50/60HZ
- Package Size: 510*375*250cm
- Range: Approximately 6-8 meters
- Control Method: DMX-512 Remote Control
- Four barrels of smoke oil

GST Hazer



Specification:

- Power: 1600W
- Weight: 3KG
- Voltage: 110V/220V
- Package Size: 32*24*25CM
- Control Method: DMX-512 Remote Control
- Consumables: Special fog oil
Four barrels of smoke oil

GST Leko



Specification:

- Voltage: AC95V-120V 60Hz or 210V-230V 50Hz
- Power: 50W LED module, 100W LED module, 150W LED module
- Color Temperature: 3200K/5600K
- Beam Angle: 12° -30° /20° -40°
- Power Factor: 96
- Power Supply Current: 6.25A
- Life: about 50,000-100,000 hours
- Weight: 5.2 kg



GST Gear provides high-quality products, emphasizing production craftsmanship and customized services. Our products are durable, capable of withstanding long-term use and various environmental conditions. We also offer excellent after-sales support services, aiming to establish long-term trust and cooperative relationships.